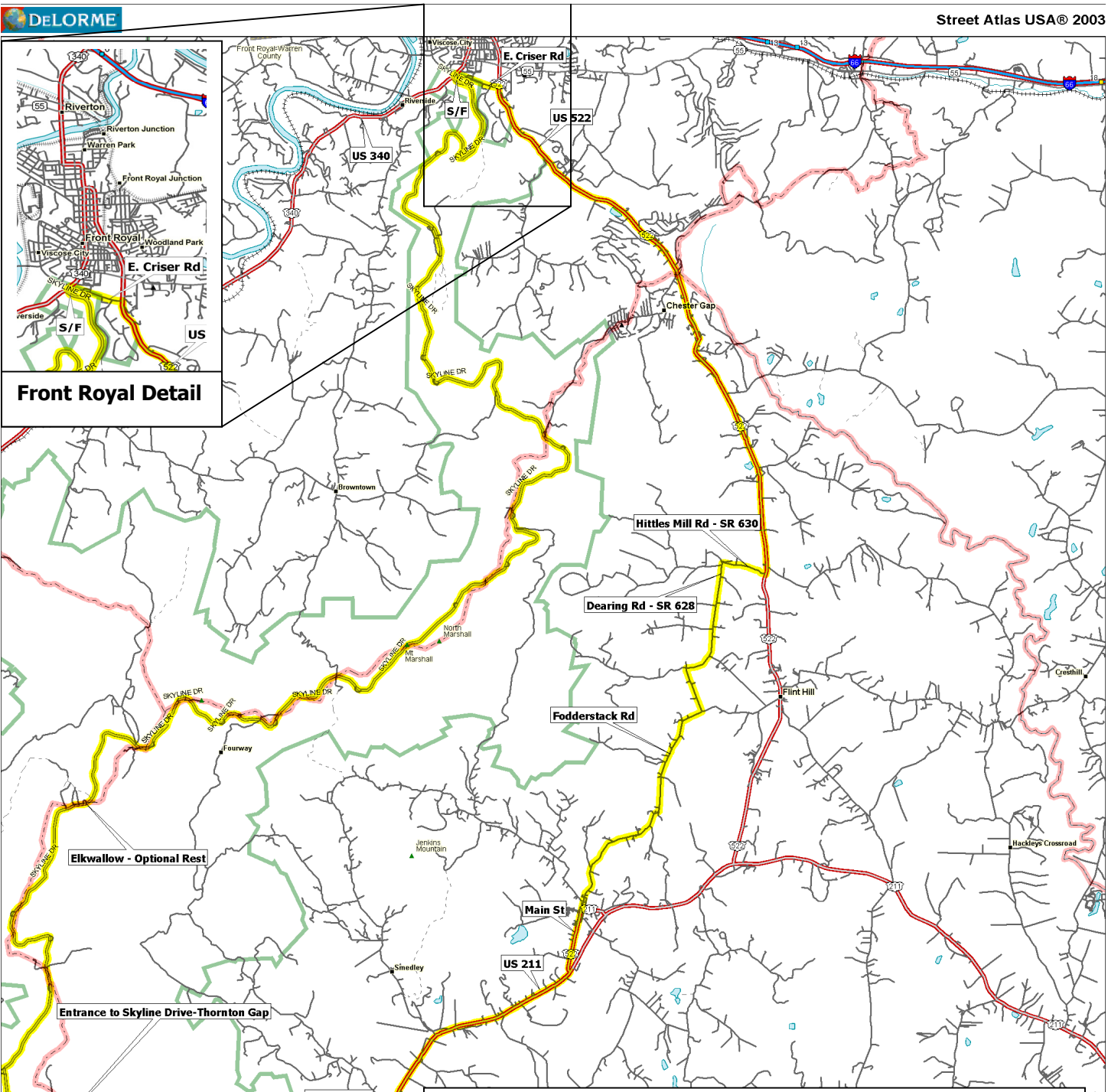


Front Royal Detail



Front Royal – Thornton Gap – Skyline Drive – Front Royal

- 0.0 Start parking pullouts to Skyline Drive northernmost entrance
- 0.1 R onto US 340 N
- 0.2 R onto E. Criser Rd
- 0.85 R onto US 522 S (Commerce St/ Remount Rd/ Zachary Talyor Hwy)
- 10.5 R onto Hittles Mill Rd (leave US 522 S)
- 11.2 L onto Dearing Rd
- 13.2 L to stay on Dearing Rd (straight is Bean Hollow Rd – dead end)
- 13.95 R onto Fodderstack Rd to Washington (Fodderstack Rd becomes Main St. and joins US 211 in Washington)
- 19.5 R onto US 522 S/US 211 W
- 20.5 Convenience store (Shell gas station) on right
- Stay US 211 W at Sperryville, VA to Thornton Gap to Skyline Drive
- 31 R onto Skyline Drive (pay fee/show pass)
- 62 Arrive Skyline Drive northernmost entrance

www.winchesterwheelmen.org



P.O. Box 1695, Winchester, VA 22604
info@winchesterwheelmen.org

www.winchesterwheelmen.org

